



2½" CAST IRON CURB BOX

for ¾"-2" Curb Stops



2½" CAST IRON CURB BOXES

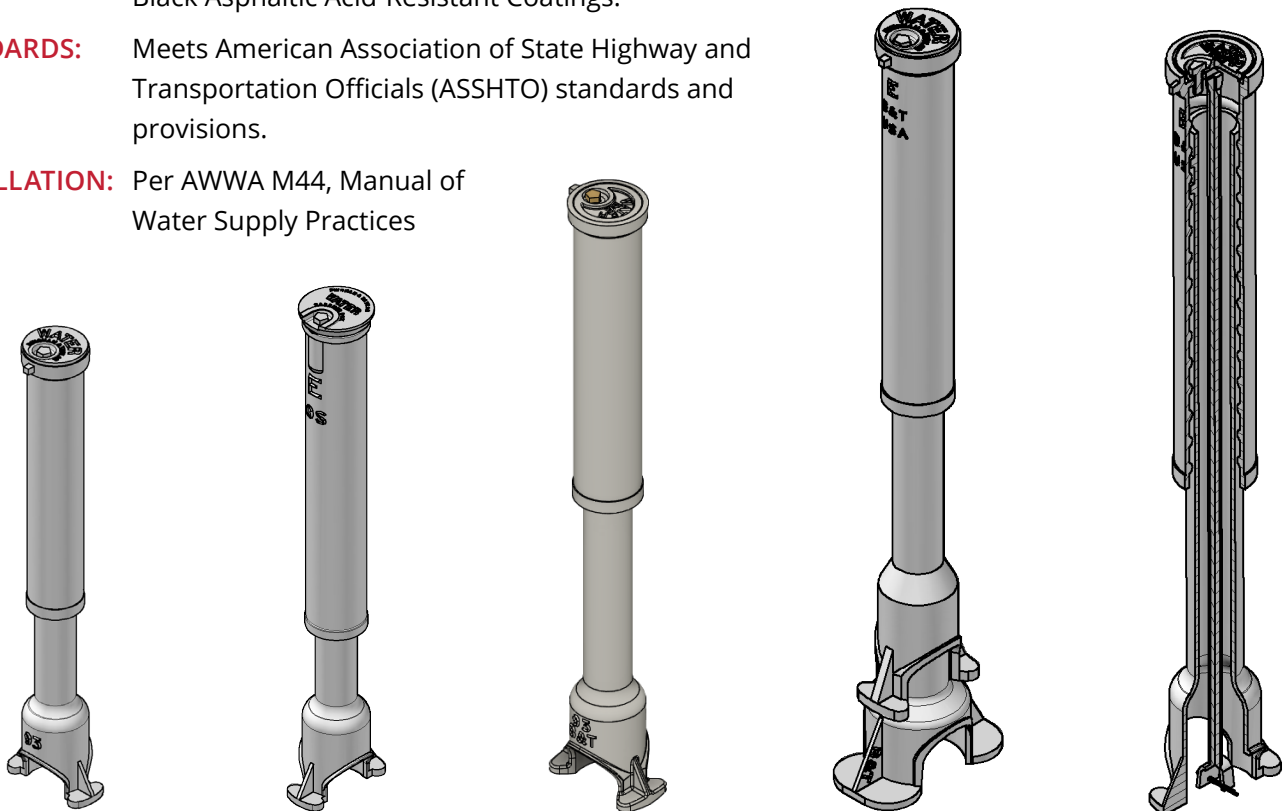
Bingham & Taylor offers a versatile selection of municipal castings, including Buffalo-style screw-type and slide-type curb boxes (also known as service boxes) in various lengths to match your bury depth needs. **Designed for curb stop sizes from ¾"-2"**. The standard bottom fits ¾"-1¼" curb stops. Add an enlarged base for 1½"-2" curb stops. These curb boxes come in three lid styles—Old Style (OS), New Style Flush (NSF), and New Style (NS). A full range of tools and accessories ensures adaptability for any application.

Bingham & Taylor's products are 100% made in the U.S., exceeding Build America, Buy America (BABA) and American Iron and Steel (AIS) provisions, including compliance with Lead Service Line Replacement (LSLR) guidelines. Our sustainable manufacturing processes prioritize resource efficiency, emissions reduction, and long-term product durability.



GENERAL SPECIFICATIONS

- MATERIAL:** Produced with Cast Iron ASTM A48 Class 30 and are 100% manufactured in the U.S., exceeding BABA, AIS, and LSLR requirements.
- COATING:** Asphaltic Coating meets Federal Specification TTC-494 Type I, II, & III Black Asphaltic Acid-Resistant Coatings.
- STANDARDS:** Meets American Association of State Highway and Transportation Officials (ASSHTO) standards and provisions.
- INSTALLATION:** Per AWWA M44, Manual of Water Supply Practices



2½" CAST IRON CURB BOX ASSEMBLIES

A full assembly includes a WATER lid & brass bolt and top section & bottom section.

- Choose the style (Old Style, New Style Flush, or New Style) and extension range (Dim. A) to fit your requirements.
- Standard bottom fits ¾"-1¼" curb stops. For 1½"-2" curb stops, must add an enlarged base to standard bottom.
- Comes standard with a WATER lid; other lid lettering available including your own customization.
- Longer boxes can be configured by adding extensions.

OLD STYLE (OS)

Lid fits securely over the rim of the E OS top section.

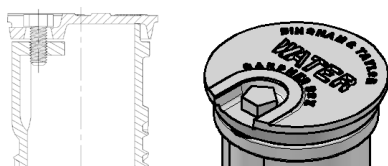


Fig. No. 4901-A

(Offered in E OS Only)

NEW STYLE FLUSH (NSF)

Lid fits flush inside the rim of the top section.

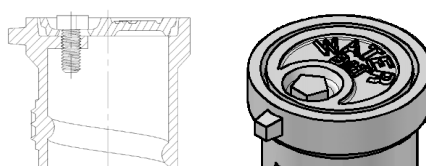


Fig. No. 4901-B

NEW STYLE (NS)

Lid is positioned on top of the rim of the top section.

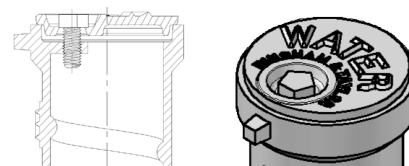


Fig. No. 4901-C

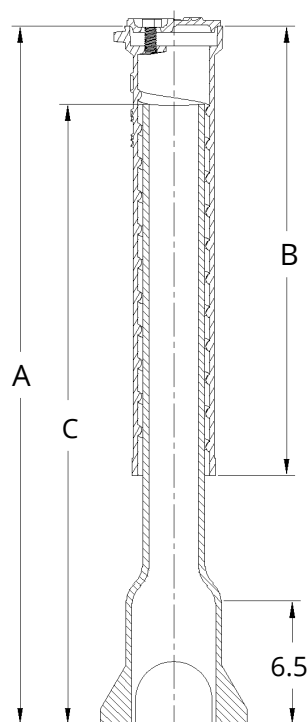


Fig. No. 4901

BUFFALO-STYLE SCREW-TYPE ADJUSTMENT

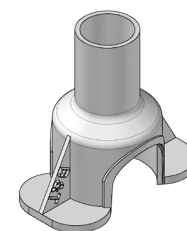
LID/TOP STYLE (Choose 1)			EXTENSION RANGE DIM. A	TOP		BOTTOM	
OLD STYLE (OS)	NEW STYLE FLUSH (NSF)	NEW STYLE (NS)		NO.	DIM. B	NO.	DIM. C
-	I2B93DWF	I2B93DW	33-46	D	20.0	93	28.0
I2B93EWO	I2B93EWF	I2B93EW	33-50	EOS & E	23.5	93	28.0
-	I2B94DWF	I2B94DW	40-56	D	20.0	94	38.0
I2B94EWOS	I2B94EWF	I2B94EW	40-60	EOS & E	23.5	94	38.0
-	I2B94FWF	I2B94FW	40-64	F	28.0	94	38.0

SLIDE-TYPE ADJUSTMENT

- Slide-type curb boxes are available when using a No. 94-S bottom.
- To order a Slide-type box, add an "S" to the end of the part number.

ENLARGED BASE

- For 1½"-2" curb stops.
- Standard bottom fits over the enlarged base.
- Increases box by 6".



CUL2BA14E

Fig. No. 4980

All measurements are in inches.

2½" CAST IRON CURB BOX COMPONENTS

LID STYLE OPTIONS

- Choose lid style: Old Style (OS), New Style Flush (NSF), or New Style (NS).
 - Old Style (OS) lids must be used with an E Old Style (OS) top section.
 - New Style Flush (NSF) and New Style (NS) lids fit with standard D, E, & F top sections.
- Comes standard with WATER lettering or choose WATER (W), SEWER (S), FIRE (F), IRRIGATION (IRR) or your own customization.
- A brass bolt (BRASSBOLT) is needed to secure the lid to the top section (sold separately).

LID LETTERING	LID STYLE OPTIONS (Choose 1)		
	OLD STYLE (OS)	NEW STYLE FLUSH (NSF)	NEW STYLE (NS)
WATER	CUL2LWOS	CUL2LWRDF	CUL2LWRD
SEWER	CUL2LSOS	CUL2LSRDF	CUL2LSRD
FIRE	CUL2LFOS	CUL2LFIREF	CUL2LFIRE
IRR	-	CUL2LIRRF	CUL2LIRR

OLD STYLE (OS)



Shown with SEWER lettering

NEW STYLE FLUSH (NSF)



Shown with WATER lettering

NEW STYLE (NS)



Shown with FIRE lettering

TOP SECTIONS

- We offer four Buffalo-style, screw-type adjustment top sections: D New Style (NS), E New Style (NS), E Old Style (OS), and F New Style (NS).
- Choose the style (Old Style or New Style) and the height to best suit your needs.
- Offered in screw-type only.
- These tops pair with both screw-type and slide-type bottoms and extensions.

PART #	NO.	HEIGHT
CUL2TDN	D	20.0
CUL2TEN	E	23.5
GRE2TEO	E OS	23.5
CUL2TFN	F	28.0

D TOP NEW STYLE (NS)



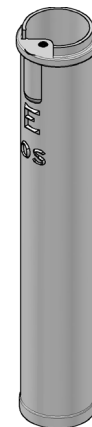
CUL2TDN

E TOP NEW STYLE (NS)



CUL2TEN

E OS TOP OLD STYLE (OS)



GRE2TEO

F TOP NEW STYLE (NS)



CUL2TFN

All measurements are in inches.



2½" CAST IRON CURB BOX COMPONENTS

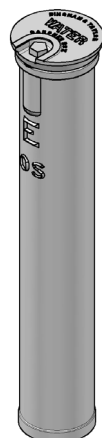
TOP SECTION & LID ASSEMBLIES WITH WATER LID & BRASS BOLT

- You can purchase a top section & lid as an assembly then add the bottom section that best suits your needs.
- Choose the style of lid and top section (Old Style, New Style Flush, or New Style) and height.
- Available in screw-type (Buffalo-style) only.
- Part numbers below include a WATER lid, brass bolt, and screw-type top section.

LID STYLE (Choose 1)			TOP SECTION	
OLD STYLE (OS)	NEW STYLE FLUSH (NSF)	NEW STYLE (NS)	NO.	HEIGHT
-	I2TLDWF	I2TLDW	D	20.0
-	I2TLEWF	I2TLEW	E	23.5
I2TLEWO	-	-	EOS	23.5
-	I2TLFWF	I2TLFW	F	28.0

OLD STYLE (OS)

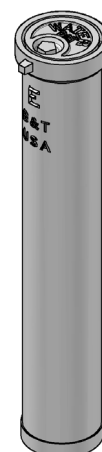
Offered in E OS Only



I2TLEWO

2½" E OS Top,
with OS Water Lid,
& Brass Bolt

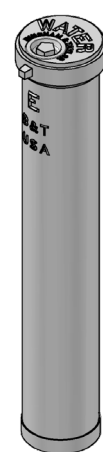
NEW STYLE FLUSH (NSF)



I2TLEWF

2½" E Top
with NSF Water Lid,
& Brass Bolt

NEW STYLE (NS)



I2TLEW

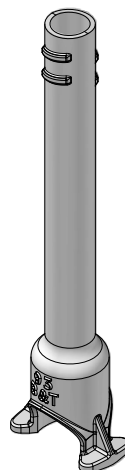
2½" E Top
with NS Water Lid,
& Brass Bolt

BOTTOM SECTION OPTIONS

- Part numbers below include a bottom section.
- Choose from screw-type (Buffalo-style) or slide-type adjustment and the height.
- Slide-type bottom available in 38" height only.

SCREW-TYPE		SLIDE-TYPE		HEIGHT
PART #	NO.	PART #	NO.	
GRE2B93B	93-B	-	-	28
GRE2B94B	94-B	CUL2B94S	94-S	38

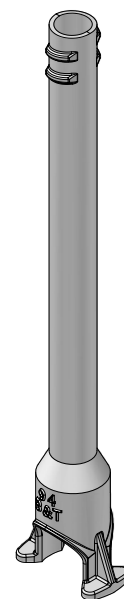
93-B



GRE2B93B

Screw-type

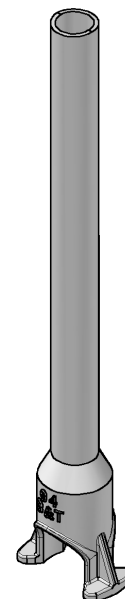
94-B



GRE2B94B

Screw-type

94-S



CUL2B94S

Slide-type



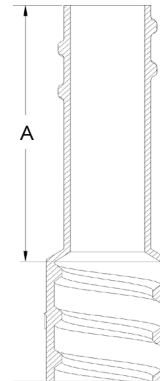
2½" CAST IRON CURB BOX COMPONENTS & ACCESSORIES

EXTENSIONS

- Used to extend total length of the curb box.
- Extensions are stackable to get to desired length.
- Available in screw-type or slide-type.

PART #		INCREASES LENGTH DIM. A
SCREW	SLIDE	
CUL2E151	CUL2E151S	9½
CUL2E152	CUL2E152S	16¾

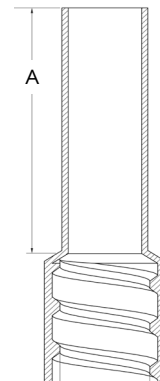
SCREW-TYPE EXTENSION



CUL2E

Fig. No. 4901-X

SLIDE-TYPE EXTENSION



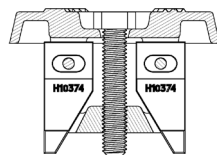
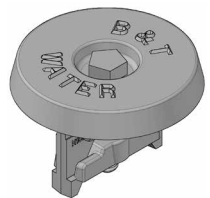
CUL2E-S

Fig. No. 4901-X-S

REPAIR LIDS

- Cast iron repair lids solve the problem of lost lids, broken lugs, or broken tops. The jaws of the repair lid expand to bear against the inside of the curb box.
- Available in Old Style (OS 10374), Old Style (OS) for use with Centering Ring, New Style Flush (NSF), and New Style (NS).
- Repair lids can be substituted for any of our standard 2½" curb box lids.

OLD STYLE REPAIR LID (10374)

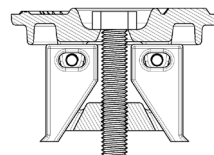
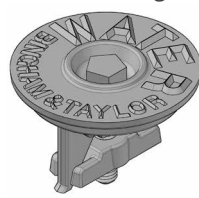


I2LBWREP10374

Fig. No. 10374-OSR

OLD STYLE REPAIR LID

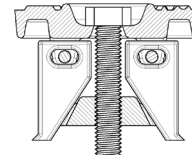
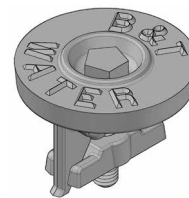
(For use with Centering Ring Only)



I2LBWREPOB

Fig. No. 4901-OSR

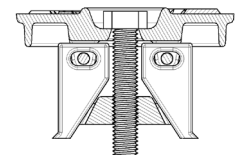
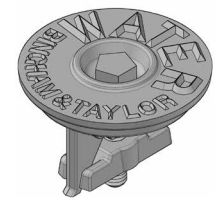
NEW STYLE FLUSH REPAIR LID



I2LBWREPNFLB

Fig. No. 4901-NSFR

NEW STYLE REPAIR LID



I2LBWREPNB

Fig. No. 4901-NSR

All measurements are in inches.

2½" CAST IRON CURB BOX COMPONENTS & ACCESSORIES

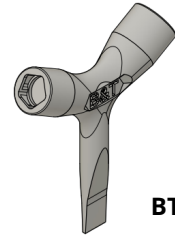
BRASS PENTAGON BOLT

- Made from corrosion-resistant brass.
- Five-sided head delivers secure fastening that prevents tampering and unauthorized access, ideal infrastructure projects requiring a high level of security.
- Size: 17/32" X 12" X 13/16" (550 TAP).



NEW STYLE PENTABOLT HAND KEY/WRENCH

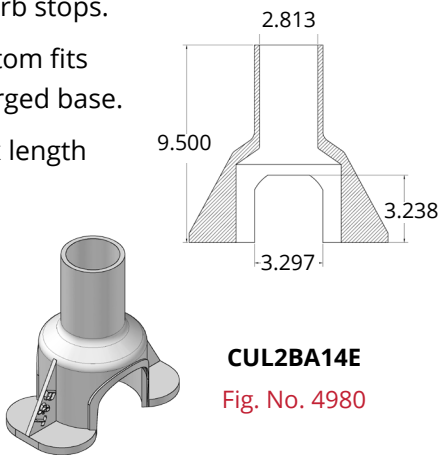
- Engineered to allow user to both lock/unlock pentabolt.
- Pry-bar edge for lifting and cleaning sod and debris away from access lid.



BTTPTAK

ENLARGED BASE

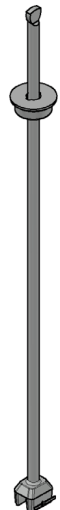
- For 1½"-2" curb stops.
- Standard bottom fits over the enlarged base.
- Increases box length by 6".



CUL2BA14E
Fig. No. 4980

ROD, CENTERING RING & PIN SETS

- The permanent steel rod assembly (a rod, centering ring & pin) is forged at the top to accommodate a standard curb key.
- Rods are available in carbon steel (5/8" diameter) or stainless steel (½" & 5/8" diameter).
- These components work together to provide a reliable and accessible means of controlling the water supply through the curb stop.



FOOT PIECES

The foot piece is centered over the curb stop, providing a firm base and preventing the curb box from moving when the valve is operated.

PART #	SIZE OF CURB STOP
CULMFTPC3/4	¾
CULMFTPC1	1
CULMFTPC1.25	1¼

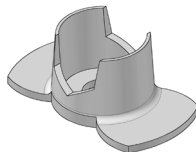
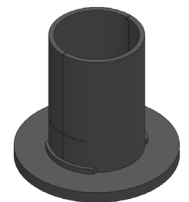


Fig. No. 4970

STABILIZER

- Minimizes settling and shifting of the curb box.
- Centers valve box over operating nut.
- Helps prevent backfill from entering box.
- Protects the epoxy coating of the valve.



ADP80003
Fig. No. ADP-CSA



THE BINGHAM & TAYLOR DIFFERENCE

Bingham & Taylor has the most diverse product line in our industry. We pride ourselves on providing timely service and quality products backed by a knowledgeable and dedicated staff.

We are a company founded upon the principles of collaboration, invention, integrity, and excellence. We have a history of moving the industry forward by listening to our customers and constantly working towards new approaches to every step of our process. We believe that if you're not moving forward, you're falling behind.

CONTACT US

14115 Lovers LN #103
Culpeper, VA 22701 USA
sales@bandt-us.com

VISIT OUR WEBSITE

www.bandt-us.com

PLACE AN ORDER

orders@bandt-us.com

