



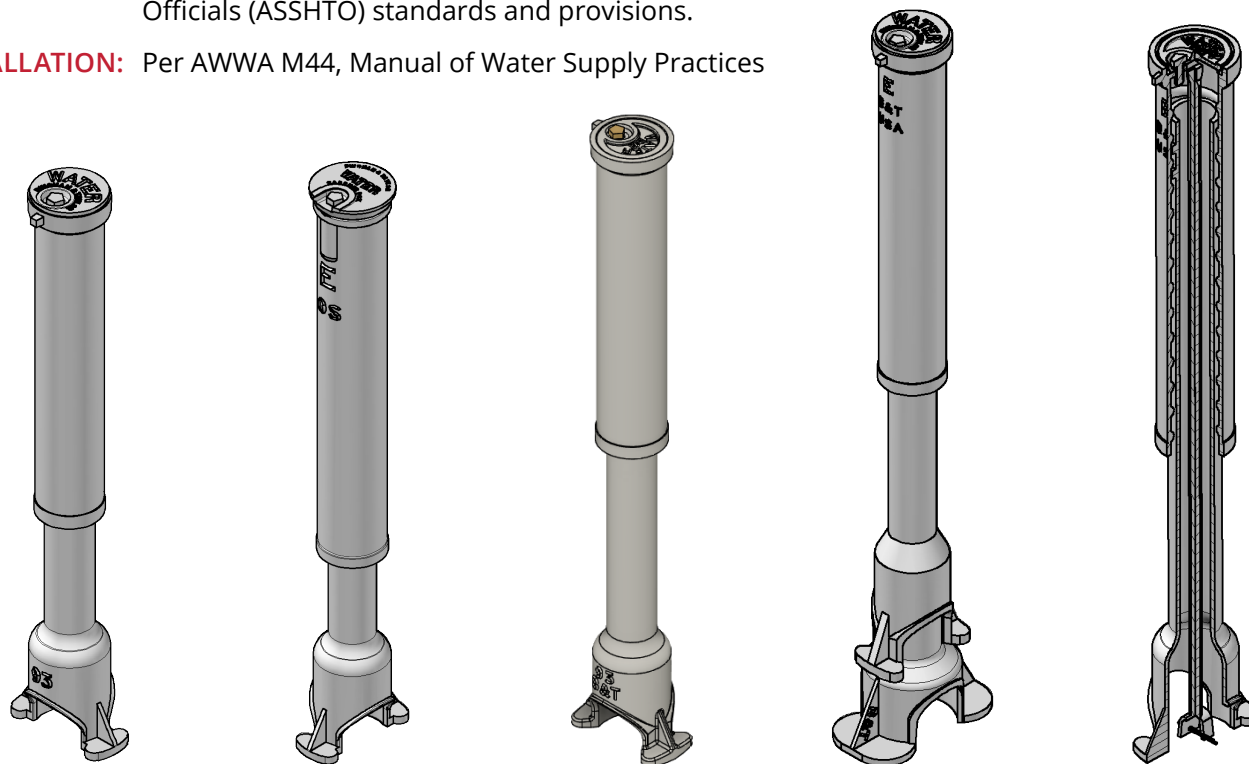
2½" CAST IRON CURB BOXES

for ¾"-2" Curb Stops

Bingham & Taylor offers a versatile selection of municipal castings, including Buffalo-style screw-type and slide-type curb boxes (also known as service boxes) in various lengths to match your bury depth needs. **Designed for curb stop sizes from ¾"-2"**. The standard bottom fits ¾"-1¼" curb stops. Add an enlarged base for 1½"-2" curb stops. These curb boxes come in three lid styles—Old Style (OS), New Style Flush (NSF), and New Style (NS). A full range of accessories, including extensions, repair lids, rod, ring & pin sets, foot pieces, stabilizers, and hand keys, ensures adaptability for any application.

GENERAL SPECIFICATIONS

- MATERIAL:** Produced with Cast Iron ASTM A48 Class 30 and are 100% manufactured in the U.S., exceeding BABA, AIS, and LSLR requirements.
- COATING:** Asphaltic Coating meets Federal Specification TTC-494 Type I, II, & III Black Asphaltic Acid-Resistant Coatings.
- STANDARDS:** Meets American Association of State Highway and Transportation Officials (ASHTO) standards and provisions.
- INSTALLATION:** Per AWWA M44, Manual of Water Supply Practices





2½" CURB BOX ASSEMBLIES

A full assembly includes a WATER lid & brass bolt and top section & bottom section.

- Choose the style (Old Style, New Style Flush, or New Style) and extension range (Dim. A) to fit your requirements.
- Standard bottom fits ¾"-1¼" curb stops. For 1½"-2" curb stops, add an enlarged base to standard bottom.
- Comes standard with a WATER lid; other lid lettering available including your own customization.
- Longer boxes can be configured by adding extensions.

OLD STYLE (OS)

Lid fits securely over the rim of the E OS top section.

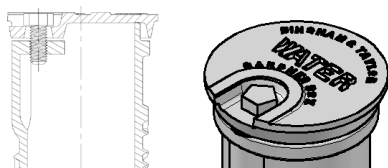


Fig. No. 4901-A
(Offered in E OS Only)

NEW STYLE FLUSH (NSF)

Lid fits flush inside the rim of the top section.

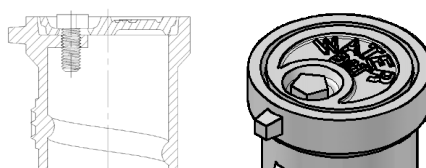


Fig. No. 4901-B

NEW STYLE (NS)

Lid is positioned on top of the rim of the top section.

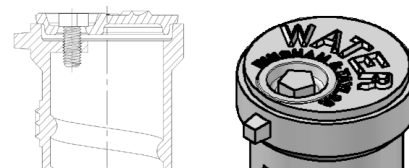


Fig. No. 4901-C

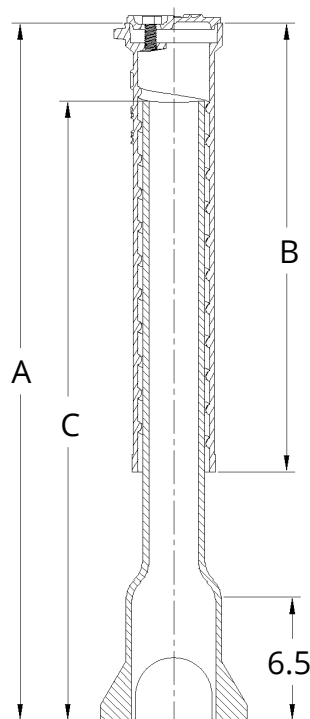


Fig. No. 4901

BUFFALO-STYLE SCREW-TYPE ADJUSTMENT

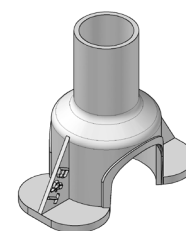
LID/TOP STYLE (PICK 1)			EXTENSION RANGE DIM. A	TOP		BOTTOM	
OLD STYLE (OS)	NEW STYLE FLUSH (NSF)	NEW STYLE (NS)		NO.	DIM. B	NO.	DIM. C
-	I2B93DWF	I2B93DW	33-46	D	20.0	93	28.0
I2B93EWO	I2B93EWF	I2B93EW	33-50	EOS & E	23.5	93	28.0
-	I2B94DWF	I2B94DW	40-56	D	20.0	94	38.0
I2B94EWOS	I2B94EWF	I2B94EW	40-60	EOS & E	23.5	94	38.0
-	I2B94FWF	I2B94FW	40-64	F	28.0	94	38.0

SLIDE-TYPE ADJUSTMENT

- Slide-type curb boxes are available when using a No. 94-S bottom.
- To order a Slide-type box, add an "S" to the end of the part number.

ENLARGED BASE

- For 1½" - 2" curb stops.
- Standard bottom fits over the enlarged base.
- Increases box by 6".



CUL2BA14E
Fig. No. 4980



Bingham & Taylor's products are 100% made in the U.S., exceeding requirements of the Build America, Buy America (BABA) and American Iron and Steel (AIS) provisions, including compliance with Lead Service Line Replacement (LSLR) guidelines. Our sustainable manufacturing processes prioritize resource efficiency, emissions reduction, and long-term product durability.