

*West Coast Region*



**BINGHAM & TAYLOR**

*Proudly Made in the USA*

---

**WATER UTILITY SERVICE  
PRODUCT LINE**

# BINGHAM & TAYLOR: EXCELLENCE REDEFINED

Bingham & Taylor is a long-standing and trusted leader in the industry, offering the most diverse product line for easy, safe, and secure access to underground utilities.

**CONTINUITY** Bingham & Taylor is the original patentee of the Buffalo-style utility box design. This design has been in use for over a century and is a standard for water and natural gas utilities throughout the world.

**DURABILITY** All of our product lines have been engineered to deliver durability and strength that is both high impact and wear resistant, while delivering reduced weight and cost.

**FLEXIBILITY** We make every effort to ensure our cast iron and plastic parts are interchangeable.

**QUALITY** Our state-of-the-art metallurgy lab, led by a team of engineers, ensures the highest standards of quality and consistency. Our products are proudly 100% made in the USA, adhering strictly to the American Iron and Steel (AIS) Requirement and the Build America Buy America (BABA) Act standards, reflecting our commitment to quality and manufacturing excellence.

**COLLABORATIVE** Our product design engineers work with you and your team to ensure your specific requirements and specifications are met.

## EXCLUSIVE BISON BOXES

- **Bison Boxes** deliver a lightweight, high-strength alternative, featuring a cast iron rim and lid complemented by high-strength, thick-walled ABS plastic top and bottom sections. Cast iron rims, lids, and top sections are suitable for roadway installations and are H20 load rated. Once the cast iron rim or top section is embedded in the concrete or asphalt, the roadway takes the loading, not the plastic components below.
- **Bison CIP Boxes** blend high-strength, lightweight ABS plastic for the bottom section with a standard cast iron lid and top section. This combination offers a lighter, more cost effective solution while retaining the locating benefits of cast iron.

## BISON CURB BOXES

- **Bison Curb Boxes** consist of a cast iron rim and cast iron lid with a brass bolt, complemented by high-strength, thick-walled ABS top and bottom sections. These are available in screw- and slide-type adjustment. Additional options include carbon steel or stainless-steel rods and centering rings.
- **Bison CIP Curb Boxes** include a high-strength, lightweight ABS plastic bottom section with standard cast iron top section and lid with brass bolt.

## BISON VALVE BOXES

- **Bison Valve Boxes** feature a cast iron rim and lid with thick-walled ABS plastic top and bottom sections. Available in screw- and slide-type adjustment, with various bottom bells available to suit different applications. These boxes are completely interchangeable with our 5¼" Buffalo-style cast iron Valve Boxes.
- **Bison CIP Valve Boxes** combine high-strength ABS plastic for the bottom section with a standard cast iron top section and lid.





---

## MARK SERIES WEST COAST VALVE BOXES

Our **Mark Series Valve Boxes** offer revolutionary cast iron alternatives to traditional concrete solutions, surpassing them in performance and longevity. Specifically designed to withstand heavy traffic, these valve boxes boast unmatched durability, easier installation, and extended service life, making them the ideal choice for utility management.

Choosing our Mark Series Valve Boxes also means fewer replacements due to breakage during transit, unlike concrete boxes, which significantly reduces installation hassles. This not only supports more sustainable infrastructure practices but also offers a cost-effective, superior alternative to traditional concrete boxes.

### MARK V SERIES

The **Mark V**, weighing as much as half the weight of typical concrete boxes—features 10" diameter round and triangular configurations, available with or without flange. These boxes meet an H20 load rating providing robust performance without the need for a concrete apron, facilitating easier handling and installation.

### MARK 7 SERIES

Expanding on our robust offerings, the **Mark 7 Valve Box** is perfectly sized with a 12" diameter round design that easily fits over 8" PVC pipes, enhancing capacity and durability for high-demand environments. These boxes set a new standard in the industry with its load-bearing capabilities and perfect fit.

### CUSTOM LIDS

All **Mark series Lids** can be customized with your choice of lettering, logos, and colors. In areas with high levels of humidity, like the west coast, moisture can be a common cause of corrosion and rust on metal surfaces. Powder coating provides a barrier that protects against moisture infiltration, keeping the metal underneath safe from oxidation. Optional features like a locking bar and bolt enhance security, keeping installations secure and tamper-proof.

---

## VALVE BOXES & VALVE BOX ACCESSORIES

- **5¼" cast iron Buffalo-style Valve Boxes** are available in both 2-piece (lid plus top and bottom sections) or 3-piece (lid plus top, middle, and bottom sections) configurations, with either screw- or slide-type adjustments. Choose from either a standard or arched bottom.
- **7" cast iron Buffalo-style Valve Boxes** are 3-pieces including a lid, top section, middle section, and base. Accessories for the 7" Valve Boxes include extensions, locking lids, and paving risers.

### VALVE BOX ACCESSORIES

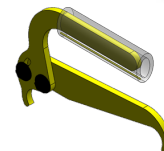
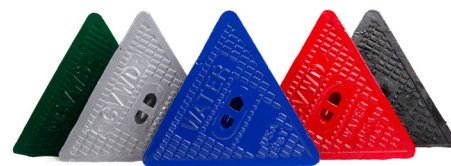
We offer a comprehensive range of accessories for our Valve Boxes, including extensions, paving risers, long-skirt lids, locking lids, Valve Box stabilizers, paving risers, and custom lids.

**Lid Lifter tool** provides the leverage and strength to remove and lift heavy utility lids that have built-up dirt and grime. Available with a built-in hook for shaped lids and an adjustable handle.

---

## CURB BOXES

- **Buffalo-style cast iron Curb Boxes** come in New Style, New Style Flush, and Old Style. These feature a cast iron lid with brass bolt, along with top and bottom sections. They are available in various extension ranges. Accessories include extensions, enlarged base, foot-pieces, centering rings, and carbon steel or stainless-steel rods.



# METER PITS, METER FRAMES, LIDS & COVERS, & METER BOXES

## METER PITS

- **Injection-molded Meter Pits** are crafted from high-grade, lightweight, and strong plastic, and engineered to withstand a crush forces of 20,000 lbs. Available in 18", 20", and 24" diameters with various lengths, we also offer Meter Pit extensions in all diameters. These pits are not only cost-effective but boast rapid delivery times, ensuring efficiency and reliability.
- **Rotational-molded Meter Pits** Available in 15", 18", 30" and 36" diameter and have a ridged base that resists settling. Meter Pit extensions are available in 3" and 6" fixed heights.

## METER FRAMES, LIDS, & COVERS

- **Meter Frames** are made of cast iron and available for 18" and 20" diameter Meter Pits.
- **Meter Lids** Cast iron Meter Lids are available in solid, Touch-Read, and Radio-Read styles. Our Maverick Meter Lids are available in Solid and Radio-Read (recessed thru-hole) styles for cast iron Meter Frames, along with monitor lids, mid-rings, and expander rings. Our latest W3 20" frost-proof frame features an internal plastic pan for colder climates.

## METER BOXES

Our MBX-1 and MBX-2 cast iron meter boxes are designed for strength and reliability, with tighter lid-frame tolerances to eliminate liability issues caused by dislodged or kicked-out lids. These Meter Boxes meet H20 load ratings and are available in Solid or Radio-Read models.



## THE BINGHAM & TAYLOR DIFFERENCE

Bingham & Taylor has the most diverse product line in our industry. We pride ourselves on providing timely service and quality products backed by a knowledgeable and dedicated staff. We are a company founded upon the principles of collaboration, invention, integrity, and excellence. We have a history of moving the industry forward by listening to our customers and constantly working towards new approaches to every step of our process. We believe that if we're not moving forward, we're falling behind.

## CONTACT US

14115 Lovers LN • Culpeper, VA 22701 | (540) 825-8334

orders@bandt-us.com | [www.bandt-us.com](http://www.bandt-us.com)

