



# LID LIFTERS & PENTABOLT HAND TOOL

*for Safer, Easier Access to  
Underground Utilities*



## LID LIFTERS



The Lid Lifter offers exceptional leverage and strength, making it easy to remove even the most stubborn and heavy utility lids. Its patented design ensures a secure grip on the heaviest lids, providing a reliable solution for lifting, carrying, and installing. Durable, versatile, and lightweight, it is perfect for fieldwork. The Lid Lifter is an essential tool for every truck, ensuring your team can handle any job with ease.

### SAFER, EASIER ACCESS SOLUTION

The Lid Lifter's ergonomic design minimizes physical effort, reducing strain on workers' backs, shoulders, and arms. Its efficient leverage system allows even the heaviest lids to be lifted with minimal force, decreasing fatigue and enhancing job performance. Unlike makeshift tools like screwdrivers, which can be risky and inefficient, the Lid Lifter offers a secure, reliable grip for better control and safety.



### CONVENIENT & FLEXIBLE

The adjustable Lid Lifter offers maximum versatility, easily adapting to different lid sizes and eliminating the need for multiple tools. Its 25-inch extension handle allows workers to lift or remove lids without bending, helping to reduce back strain and fatigue.





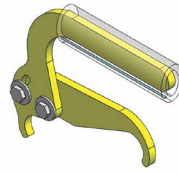
## SHAPED LIDS

Designed with a built-in hook, the Lid Lifter easily handles round, square, rectangular and irregularly shaped lids, providing a dependable solution for a wide range of utility access needs.

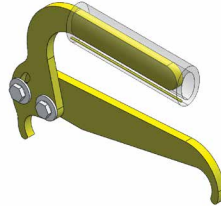
## LID LIFTERS

PART #	DESCRIPTION
ETD4LL	4" Valve Box Lids
ETD5LLG2	5¼" Valve Box Lids
ETDUVCL	Adjustable 5¼" - 12½" Lids
ETD325	25" Extension T-Handle

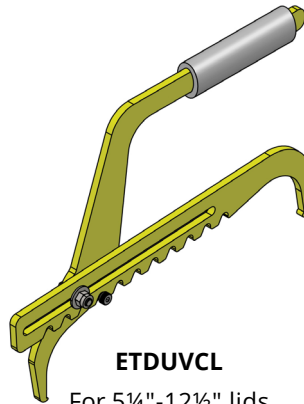
*All measurements are in inches.*



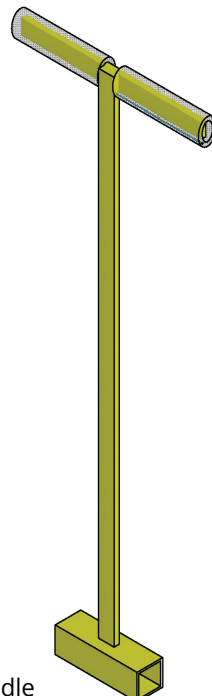
**ETD4LL**  
For 4" lids



**ETD5LLG2**  
For 5¼" lids



**ETDUVCL**  
For 5¼"-12½" lids



**ETD325**  
25" Extension T-Handle

## PENTABOLT HAND TOOL



**BTTPTAK**

Built tough for the field, this heavy-duty tool locks and unlocks pentabolts with ease, while its rugged design helps clear debris and lift stubborn lids. A corrosion-resistant painted finish and high-visibility yellow color make it durable and easy to spot in any roadside condition.

Key features include:

- Universal fit for all AWWA #1 and #2 pentabolts
- Dual functionality: operates pentabolts and lifts meter lids with a pentabolt insert
- Pry-bar edge for lifting stubborn lids and clearing away caked-in dirt, sod, and debris
- Ergonomic design for greater comfort during use

# THE BINGHAM & TAYLOR DIFFERENCE

Bingham & Taylor offers the most diverse product line in our industry, with timely service and quality products backed by a knowledgeable, dedicated staff.

We proudly manufacture 100% of our products in the USA—supporting domestic jobs, reliable supply chains, and federal compliance.

Founded on the principles of collaboration, invention, integrity, and excellence, we continue to move the industry forward by listening to our customers and improving every step of our process. We are also committed to sustainable manufacturing practices that reduce environmental impact. We believe that if you're not moving forward, you're falling behind.

## CONTACT US

14115 Lovers LN #103  
Culpeper, VA 22701 USA  
(540) 825-8334,  
[sales@bandt-us.com](mailto:sales@bandt-us.com)

## VISIT OUR WEBSITE

[www.bandt-us.com](http://www.bandt-us.com)

## PLACE AN ORDER

[orders@bandt-us.com](mailto:orders@bandt-us.com)

