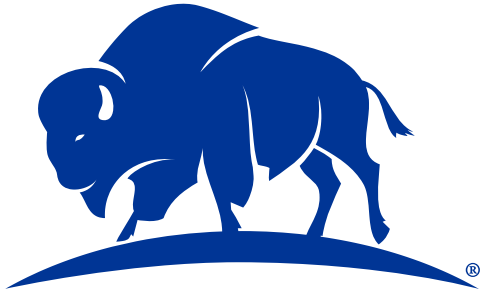


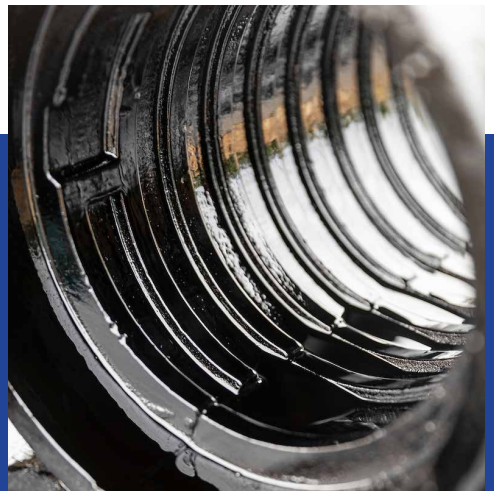
Southeast Region



BINGHAM & TAYLOR

Proudly Made in the USA

**WATERWORKS
UTILITY
PRODUCTS**



BINGHAM & TAYLOR

Built for What's Next

Since 1849, Bingham & Taylor has been the trusted leader in underground utility access. Proudly made in the USA and fully compliant with AIS and Build America, Buy America (BABA), our products deliver unmatched strength, proven performance, and lasting reliability for critical water and sewer infrastructure.

- **PROVEN HERITAGE:** Inventors of the Buffalo-style box—still the standard today—and pioneers of many other firsts in the industry.
- **BUILT TO LAST:** Products engineered for unmatched strength, impact resistance, and long-term durability.
- **QUALITY ASSURED:** In-house engineering and metallurgy ensure product consistency from foundry to field.
- **CUSTOM SOLUTIONS:** Our team partners with you to create solutions tailored to your needs—from logos and colors to sizes and configurations.

CAST IRON VALVE BOXES

Trusted across the industry, our cast iron valve boxes set the standard for strength and performance. Made from ASTM A48 Class 30, H-20 load rated, and 40,000-lb proof load tested. (Class 35 available on request.)

- **4¼" Roadway Valve Boxes:** Installed in the roadway or behind the curb. Available with arched or closed bottom to cover the operating nut.
- **5½" Valve Boxes:** Available in 2-piece (lid, top, bottom) or 3-piece (lid, top, middle, base) configurations. Choose screw- or slide-type adjustment.
- **7" Buffalo-Style Valve Boxes:** 3-piece boxes include a lid, top, middle, and base sections.
- **Valve Box Accessories:** We offer a range of options including extensions, paving risers, rite-height adapter, long-skirt lids, locking lids, stabilizers, sentinels, and custom lids with options for logos and special colors.



EXCLUSIVE BISON™ BOXES

Bison™ valve boxes combine cast iron rims and lids — where it counts — with our exclusive, patented thick-walled ABS plastic body. This rugged hybrid design is over **75% lighter than comparable all-cast-iron boxes**, reducing shipping costs, installation time, and worker fatigue while maintaining long-term durability and performance.

Cast iron rims and lids are ASTM A48 Class 30, H-20 load rated, and 40,000-lb proof-load tested, ensuring reliable roadway performance—where surrounding concrete or asphalt absorbs the load, not the plastic components. Bison™ valve boxes are available with a range of rims and base bell-styles to meet your specific installation needs.

Bison™ delivers strength where it counts — at a fraction of the weight.

- **Bison™:** Thick-walled ABS plastic top and bottom sections with cast iron rim and lid.
- **Bison™ CIP:** Cast iron top section and lid paired with a Bison™ ABS plastic bottom, delivering added surface durability, stability, and locatability with reduced weight and cost vs. full cast iron.



ROAD-RATED, HEAVY-DUTY SOLUTIONS

Our heaviest, most rugged lids are engineered for roadway use. All are ASTM A48 Class 30, H-20 load rated, and 40,000-lb proof load tested, delivering more stability and superior resistance to pop-outs compared to standard lids. Designed to fit most 5¼" valve boxes.

- **Tri-Skirt Lid:** 22-lb cast iron lid with a 4" tapered skirt that locks securely into place, preventing dangerous pop-outs even under traffic over 45 mph.
- **4" Straight Skirt Lid:** Extra-heavy 25-lb cast iron lid with a long straight skirt for maximum seating strength in roadway installations.
- **Locking Lid:** Expanding jaws secure the lid inside the top section, resisting pop-outs and ensuring stability under heavy loads.

LEAK DETECTION

- **Insert & Lid Assembly:** Drop-in insert with sensor-ready lid for 5¼" valve boxes—enables leak detection and monitoring with minimal disruption to standard installation.
- **Cast Iron Lid with Thru-Hole:** Provides direct signal transmission for leak detection sensors, ensuring strong, reliable communication and accurate system monitoring.

STABILIZERS

- **Critical Support & Alignment:** Stabilizers keep the valve box centered over the operating nut while minimizing shifting and settling over time.
- **Protective Design:** Helps prevent backfill intrusion and protects epoxy-coated valves from damage—supporting long-term performance.

VALVE SENTINELS

- **Security & Tamper Protection:** Prevents unauthorized access and shut-offs with a patented two-piece lock-out system. Use your own lock for easy lock-out/tag-out.
- **Durable & Customizable:** Made from carbon steel with color-coded plates (yellow, blue, red). Fits valve boxes from 3¾" to 12¾".

TOOLS

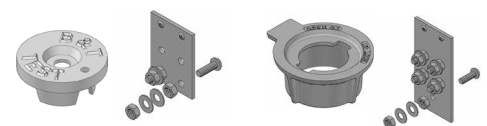
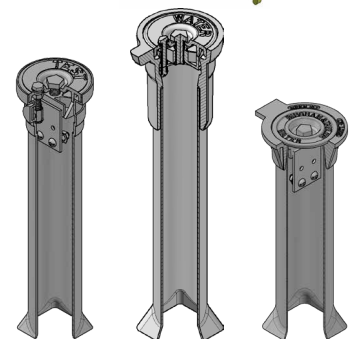
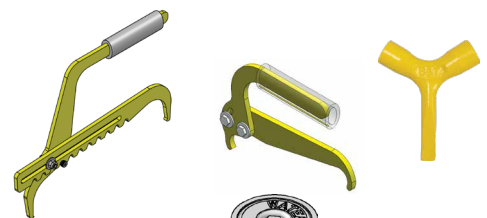
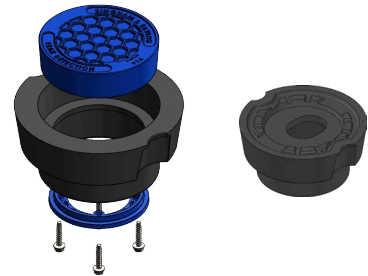
- **Lid Lifter Tool:** Durable, lightweight, and engineered for maximum leverage—removes even the heaviest utility lids with ease. A must-have tool for every truck.
- **Pentabolt Hand Tool/Wrench:** Unlocks AWWA #1 and #2 pentabolts and doubles as a pry bar for clearing debris and lifting lids. Compact and ergonomic for comfortable, all-day use.

CATHODIC PROTECTION & TEST STATIONS

Durable ABS standard plastic bodies paired with cast iron rims and lids deliver long-term strength, stability, and durability. Secure locking lids provide direct connection to tracer wires (up to 5 terminals). Flared base design prevents pullout or settling.

Models available for light-duty or heavy-duty roadway installs. Optional permanent magnet or magnetized lid ensures reliable locating.

- **2½" Test Stations with CNG-style Cast Iron Rim:** with a pentabolt locking lid.
- **2½" Test Stations with NFG-style Cast Iron Rim:** with a drop-turn locking lid. Adjustable telescoping sections allow flexible installation depths.



CLEANOUT BOXES

- **Performance:** Durable solutions for easy access to cleanout points in sewer and drainage systems.
- **Sizes & Materials:** Available in 4", 6", and 8" for sewer and drainage applications; offered in all cast iron or a combination of cast iron and plastic.

METER SOLUTIONS

- **Cast Iron Meter Boxes:** Our oval MBX-1 and MBX-2 boxes are tested to exceed a proof load rating of 53,000 lbs. A deeper cover seat area allows the lid to sit securely, preventing risk of dislodging.
- **Meter Box Lids:** Choose from ADA-compliant cast iron or Maverick™ lids with solid or recessed thru-hole styles.
- **Injection-Molded Meter Pits:** Engineered to withstand up to 20,000 lbs. of vertical load, these high-strength, lightweight plastic pits are durable, cost-effective, and easy to install. Available in 18"-24" diameters with matching extensions.
- **Rotational-Molded Meter Pits:** Designed to resist settling and maintain alignment over time, these pits are available in 15"- 36" diameters with optional extensions. Provide long-lasting service even in challenging environments.
- **Meter Pit Frames:** (cast iron or polymer composite) Provide superior strength, load-bearing capacity, and resistance to environmental wear—help maintain pit alignment and reduce long-term maintenance. Available in a range of options to suit varying needs.
- **Meter Lids for Pits:** in cast iron or Maverick™ lightweight, non-conductive polymer. Come in solid or recessed thru-hole models for radio-read systems.



© 2025 Bingham & Taylor Corp. All rights reserved. Bingham & Taylor, the buffalo logo, Maverick, and Bison are trademarks or registered trademarks of Bingham & Taylor Corp.

THE BINGHAM & TAYLOR DIFFERENCE

Bingham & Taylor delivers the industry's most diverse product line with reliable service, quality craftsmanship, and deep expertise. We proudly manufacture all our products in the USA—supporting American jobs, supply chain reliability, and federal compliance. Our commitment to innovation, collaboration, and sustainability drives us to continually improve and meet the evolving needs of our customers. We believe that if we're not moving forward, we're falling behind.



CONTACT US

14115 Lovers LN • Culpeper, VA 22701 | (540) 825-8334
sales@bandt-us.com | www.bandt-us.com



Florida sales representation:
3563 Lake Breeze Dr. • Orlando, FL 32808
5411 NW 15th St. • Margate, FL 33063
407.291.6035 • orders@spiritgroupinc.com

